

Torksey Lock Trail

On the Fossdyke Canal

Start outside the Visitor Centre

Torksey Lock

Torksey Lock is built where the River Trent and the Fossdyke Canal meet. The River Trent is tidal, it has strong currents and floods very easily. This means the lock keeper at Torksey Lock has an especially important job to do.

Torksey Lock is the only lock on the Fossdyke Canal.



In the past boaters often squabbled about who should use the lock first. We lock keepers had to sort the arguments out!



Activity

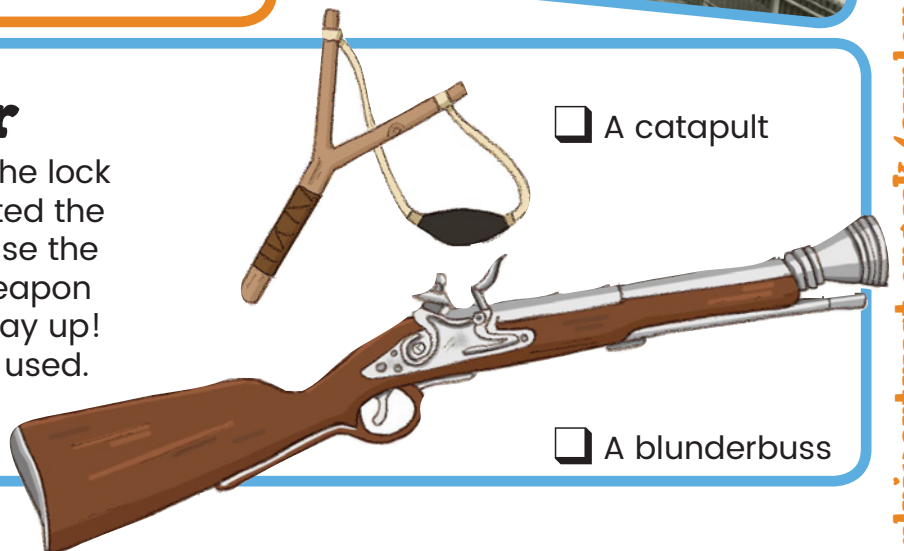
Can you spot:
 The old lock keeper's house?

Lock keepers used to live in this house.



The toll keeper

The toll keeper often lived in the lock keeper's house too. He collected the money that boaters paid to use the canals. Toll keepers kept a weapon just in case someone didn't pay up! Tick the weapon you think he used. Answer on page 6.



A catapult

A blunderbuss

Map of Torksey Lock



River Trent

Pontoon

Clapper gate

Floodgates

Crossing place

Car park

Visitor Centre

Cafe

Toilets

Slipway

Footpath

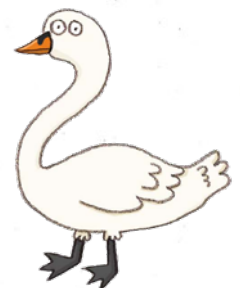
Sluice gate

Lock keeper's house

Torksey Lock

Fosdyke Canal

TO LINCOLN



Always remember to stay **SAFE** near water – Stay Away From Edge

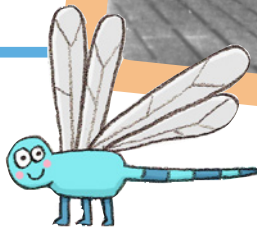
The Great Northern Railway

When the railway companies arrived in Lincoln in 1848, the Great Northern Railway took over the running of the Fossdyke Canal. Trains were used to carry goods such as coal, but the canal was still used for carrying some cargos, such as building materials.

What are the men using to unload goods from this boat on the River Trent?
They are using....



The railway put their name on all their equipment. Some of it is still here!

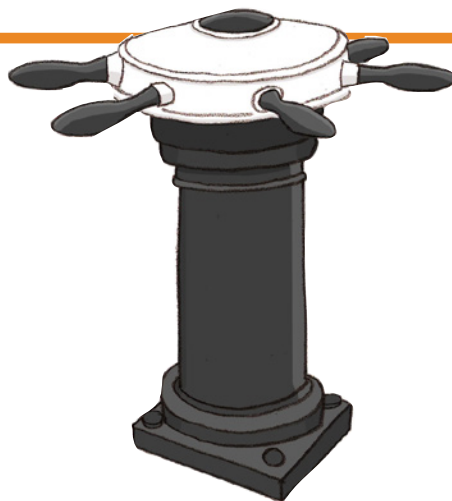


Look

... out for:



the well cover in the garden.
What do you think the letters GNR stand for?



the capstan that used to turn railway turntables.
At Torksey they are still used to open the first set of locks.

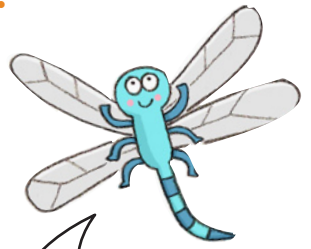


the old life belt which has the Great Northern & Great Eastern joint railway company stamped on it.

Walk along the footpath alongside the Fossdyke Canal.
Stop by the old canal cottages

Working on the Fossdyke Canal

Canal workers such as carpenters, blacksmiths and lengthsman lived in these cottages.



Activity

Can you spot The Wheelhouse?
It used to be a pub and a shop for boaters and workers. They would have a drink, buy goods and swap news.



The wheelhouse was a great place for a gossip too!

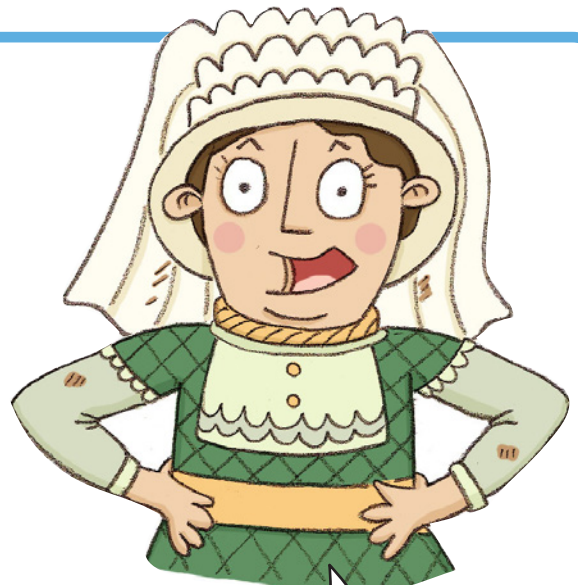
The lengthsman's job was to check his length of the canal for leaks and weak places along the bank.



Activity

This boater has stopped at The Wheelhouse to buy food for a week. Write down six items she should buy.

- 1
- 2
- 3
- 4
- 5
- 6



Boaters didn't have fridges to stop food going bad.

Walk along to the sluice gate

What else lives at Torksey Lock?

Lots of birds, animals, insects and fish live at Torksey too. The River Trent is famous for HUGE pike that feed on the fish trapped either side of Torksey Lock.

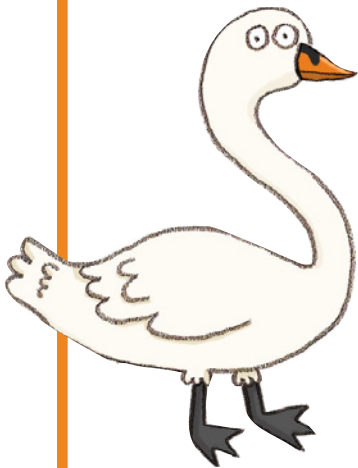
Listen

... for a sudden splash. It's a pike leaping to snatch its prey!

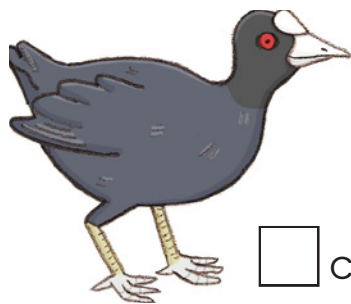
When the Fosdyke Canal floods, the lock keeper opens the sluice gate to let flood water drain into the River Trent. When the sluice gate is closed, pike hide in the dark water waiting for prey!

Activity

Count how many of these water birds you can spot in the next five minutes.



Mute swan



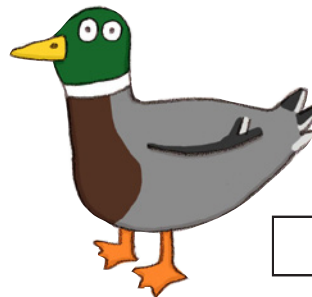
Moorhen



Coot



Gulls

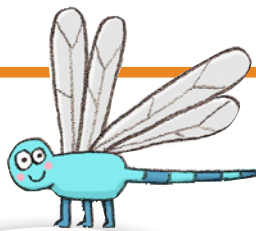


Mallard

Listen

... for the mournful cry of a peewit.

The local name for a peewit is a pyewipe.



Peewits like flat farmland. So there are plenty to see around Torksey!

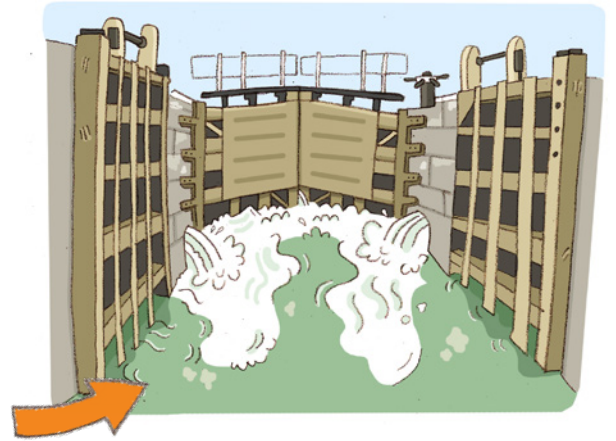


The Fosdyke Canal is great place to spot birds - and different kinds of boats too!

The River Trent

Cross the main road and walk to the footpath down to the River Trent. Stop by the floodgates. Take extra care crossing the busy road.

The River Trent often floods in winter. These huge floodgates help to control the floodwater.



Walk down the footpath to the little white 'clapper' gate



Clapper gates are only found along the River Trent.



Go through the gate and let it swing back.

Listen

... for the noise as it 'claps' shut!

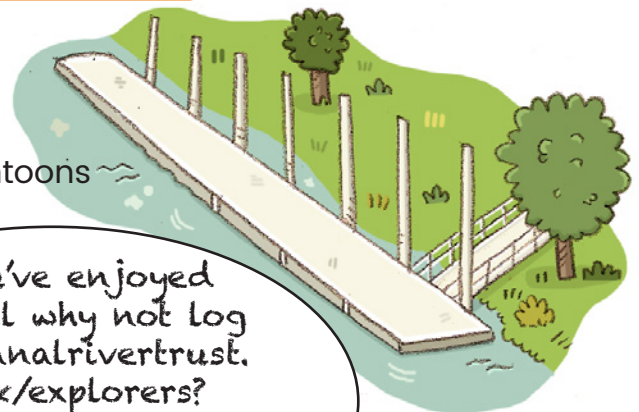
Carry along the footpath to the River Trent

Activity

Is the tide coming in or out? Look carefully. If the water is flowing left to right the tide is going out. If the water is flowing right to left, the tide is coming in. I think the tide is...

On the way back to Torksey Lock, look for the white pontoons along the opposite bank. They rise and fall with the tide so that boats can moor there when waiting to go through the lock. Fishermen like to fish from here too.

Pontoons



If you've enjoyed this trail why not log on to canalrivertrust.org.uk/explorers? You can download Fact Files for the River Trent and the Fossdyke Canal.



Answers: Page 1: A blunderbuss.